

Effective November 4, 2008



Part # AA-PM-2.9 SL

- 1. Do not overload.
- 2. Regularly lubricate the axles of wheels and all moving parts.
- 3. Do not leave the pallet truck under a heavy load.
- 4. Release the hydraulic pressure to lower the fork when the truck is not in use.
- 5. When performing maintenance, thoroughly clean all dismantled parts and replace o-rings and u-cups.

MAINTENANCE

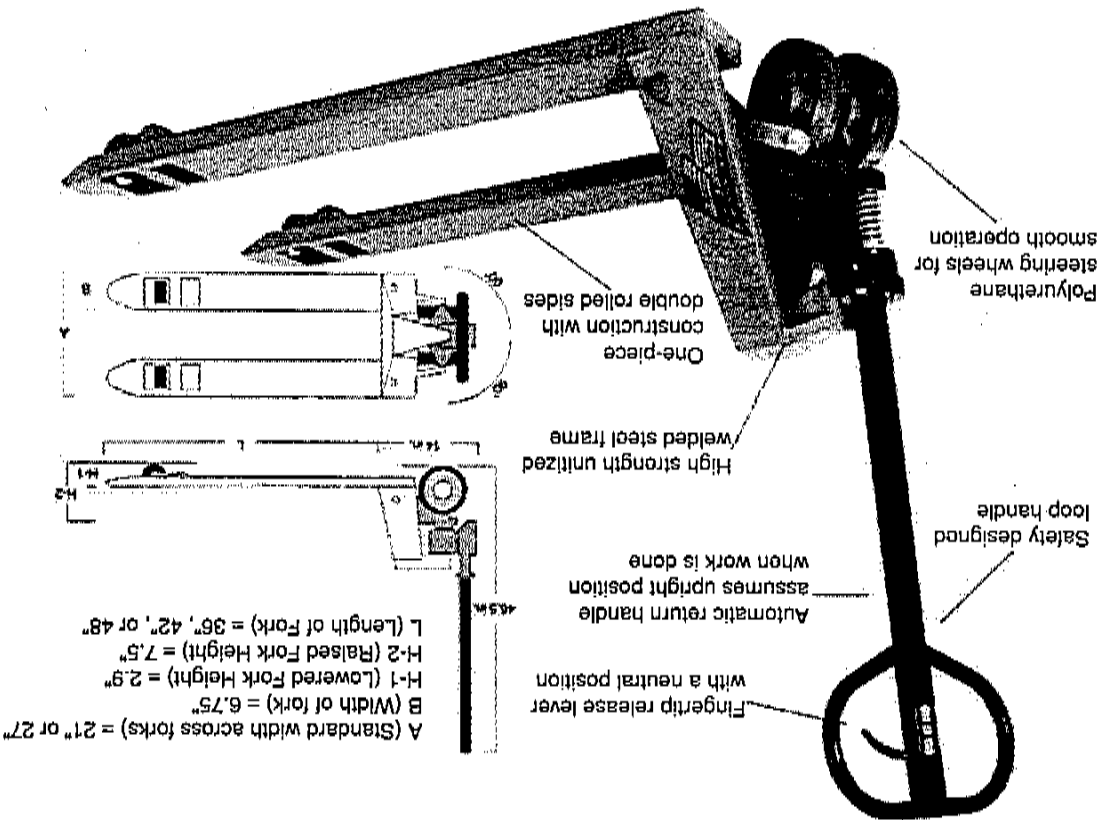
- 1. Pull the release lever up to lower the truck.
- 2. To raise the truck, push the release lever down, and then pump the handle up and down.
- 3. Evenly distribute the weight of the load across both forks.
- 4. Move the load slowly and carefully.

HOW TO OPERATE

- 1. Do not overload.
- 2. Do not concentrate the load at one point or load one fork more than the other.
- 3. Clear the immediate area of personnel during operation.
- 4. Watch the load carefully. Do not operate with an unstable or loosely stacked load. Redistribute weight if necessary.
- 5. Keep hands and feet away from lowering forks, wheels and all moving parts.
- 6. Do not operate the truck on a slope.
- 7. Do not ride or allow others to ride on the forks.
- 8. Do not move the load too fast.

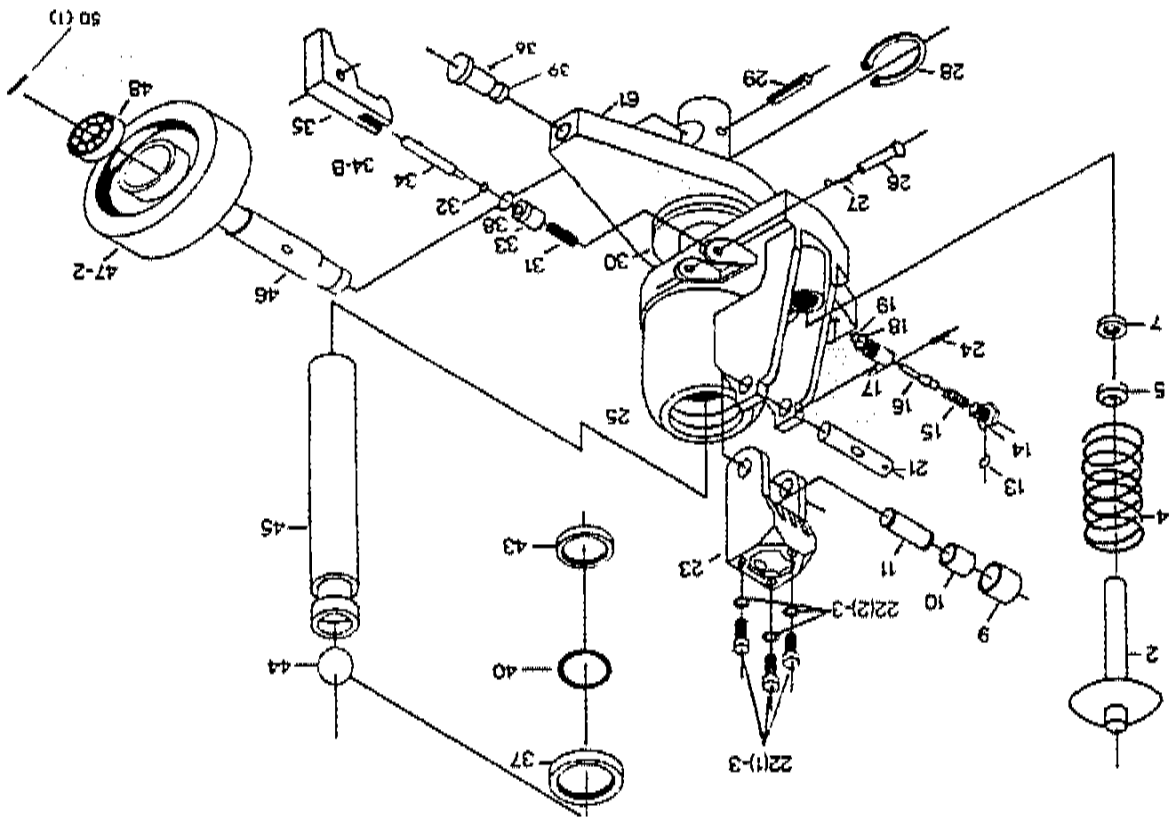
CAUTION

READ THIS MANUAL CAREFULLY AND COMPLETELY BEFORE OPERATING



2.9" Lowered Height Pallet Truck

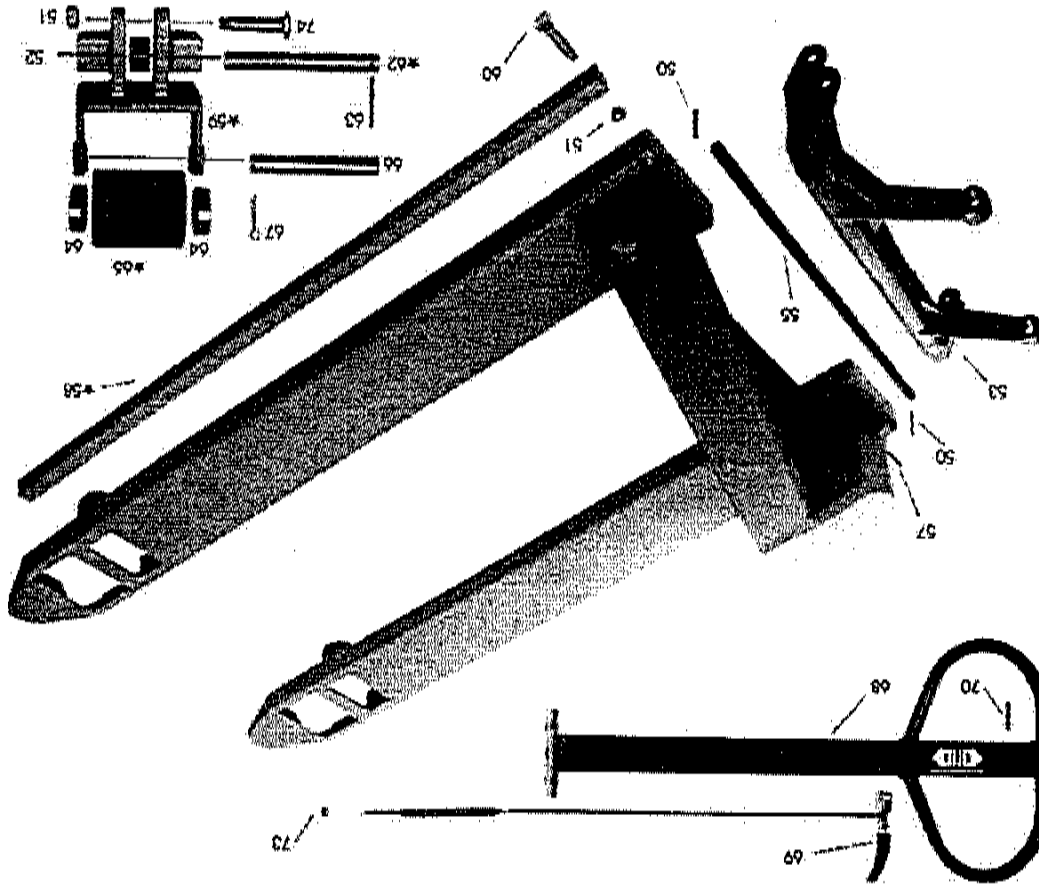




Pump is sold only as a single assembly including all parts (See Assemblies & Kits).

REQ.	#	PART #	DESCRIPTION
1	28	SL-28	Locking Ring
1	29	AA-29	Bolt
1		AA-29 N	Nut
1	30	SL-30 N	Thrust Bearing
1	31	SL-31	Spring
1	32	SL-32	O-Ring
1	33	SL-33	Release Housing
1	34	SL-34	Release Piston
1	35	SL-35	Lowering Arm
2	36	AA-36	Table Bolt
1	37	SL-37	Dust Seal
1	38	SL-38	O-Ring
2	39	AA-39	Flanged Nut
1	40	SL-40	O-Ring
1	43	SL-43	U-Packing
1	44	AA-44	Ball
1	45	SL-45 LH	Ram Piston
1	46	SL-46	Wheel Shaft
2	47	AA-7.25 x 2	Steering Wheel, Polyurethane
4	48	AA-64	Ball Bearing
2	50	AA-50	Spring Pin
1	61	SL-61	Load Bar

REQ.	#	PART #	DESCRIPTION
1	2	SL-2	Pump Piston
1	4	SL-4	Spring, Piston Return
1	5	SL-5	Dust Seal
1	7	SL-7	U-Packing
1	9	SL-9	Roller
1	10	SL-10	Bushing
1	11	SL-11	Axle
1	13	SL-13	Packing
1	14	SL-14	Screw
1	15	SL-15	Spring, High Pressure
1	16	SL-16	Valve Cone
1	17	SL-17	Valve Cone Housing
1	18	SL-18	O-Ring
1	19	SL-19	Ball, Low Pressure
1	21	SL-21	Axle for Handle
3	22	SL-22	Handle Bolts
3	22	SL-22	Spring Washers
1	23	SL-23	Handle Base
2	24	SL-24	Spring Pin
1	25	SL-25	Oil Plug
1	26	AA-26	Axle Pin
1	27	AA-27	Pin



NOTICE
 Items preceded by a star (*) are specifically designed for 2.9" lowered height trucks and do not apply to standard units.
 All other parts are interchangeable.

DESCRIPTION	PART #	REQ.
Pump Assembly	SL-01.3 P	4
Pump & Handle	SL-01 PH	2
Poly Load Wheel (2.9 in. L.H.)	AA-2.9 x 4 PM	1
Poly Load Wheel w/ Bearings (2.9 in. L.H.)	AA-2.9 x 4 PMWB	1
Poly Steer Wheel w/ Bearings (2.9 in. L.H.)	AA-7.25 x 2 PMWB	1
Steel Load Wheel w/ Bearings (2.9 in. L.H.)	AA-7.25 x 2 SMWB	1
Handle Assembly (includes SL-69, SL-70 & SL-73)	SL-68 COMPLETE	2
5000 / 5500 lb. Pump Rebuild Kit (includes SL-03, SL-06.2, SL-07.5, SL-15, SL-18, SL-31, SL-32, SL-37, SL-40, (2) SL-41 & SL-43)	SL-76 5000	2
6000 / 6500 lb. Pump Rebuild Kit (includes SL-05, SL-06.5, SL-07.5, SL-15, SL-18, SL-31, SL-32, SL-37, SL-40, (2) SL-41 & SL-43)	SL-76 6000	2
2.9" Parts & Service Manual (Available online at WesleyInternational.com)	AA-PM-2.9 SL	

#	PART #	DESCRIPTION	REQ.
51	AA-51	Lock Nut	4
52	AA-52	Exit Roller	2
53	AA-53 7	Solid Bellcrank (for 27 in. wide truck)	1
53	AA-53 0	Solid Bellcrank (for 21 in. wide truck)	1
55	AA-55 7	Torsion Rod (for 27 in. wide truck)	1
55	AA-55 0	Torsion Rod (for 20 in. wide truck)	1
57	AA-57	Roll Pin (.1875 in. x 1.5 in.)	1
58	AA-58 2.9	Push Rods (Note length and lowered height of forks)	2
59	AA-59 2.9	Load Wheel Fork	2
60	AA-60	Short Bolt	2
62	AA-62 2.9	Fork Axle (.5 in. x 8.125 in.)	2
63	AA-63	Roll Pin (.1875 in. x 2 in.)	2
64	AA-64	Bearing (for steering and load wheels)	8
65	AA-65 2.9	Load Wheel (Note: Must have model num-ber. Lowered truck height 2.875 in x 4 in.)	2
66	AA-66	Load Wheel Axle	2
67	AA-67	Cotter Pin, Load Wheel Axle	2
68	SL-68	Steering Handle	1
69	SL-69	Release Lever and Linkage	1
70	SL-70	Roll Pin (.1875 in. x 1.25 in.)	1
73	SL-73	Nut	1
74	AA-74	Long Bolt	2

3680 Chestnut Street • Scottsdale, Georgia 30079
 Toll Free 800-241-2869 • Fax 404-292-8469
 www.WesleyInternational.com



REMEDY			CAUSE			PROBLEM		
1. While holding the lever up, pull and push the loop-handle up and down several times. 2. Remove the SL-25 oil plug and add oil.			Air in the hydraulic system or insufficient hydraulic oil			Jack does not lift when the handle is operated.		
1. Remove the oil plug, and add oil. 2. Adjust the valve chain with the SL-73 adjusting nut. 3. Check the SL-34 release plunger. 4. Change the SL-19 steel ball.			Insufficient hydraulic oil or SL-19 ball does not seat			The forks do not rise when the valve handle is in the lifting position.		
1. Clean the valve cone seat. 2. Change the SL-16 valve cone, SL-17 valve cone housing and SL-18 o-ring.			SL-16 valve cone seat has trash on it			The forks lower after every pump stroke.		
1. Adjust the valve chain with the SL-73 adjusting nut. 2. Check the SL-34 release plunger.			Lowering arm does not go in properly			Lowering action does not function or lowers very slowly.		
1. Clean the valve cone seat. 2. Change the SL-16 valve cone, SL-17 valve cone housing and SL-18 o-ring. 3. Change the SL-43 u-cup.			Leak from the valve cone or leak from the u-cup in the bottom plate			The forks lower when the truck is in the raised position.		
1. Adjust the valve chain with the SL-73 adjusting nut						The forks rise when the handle is in the neutral position.		
1. Change the SL-32 o-rings.			O-ring damaged or worn			Oil leaks from the SL-34 release plunger.		
CAUTION								
When overhauling the hydraulic system, total cleanliness should be observed. Dismantled parts should be carefully cleaned and inspected. Always replace o-rings and u-cups.								
If you are unable to resolve the problem, contact you authorized dealer or call Wesley International.								
LIMITED WARRANTY								
See WesleyInternational.com for warranty information.								

Apply remedies in the order suggested.

TROUBLESHOOTING